

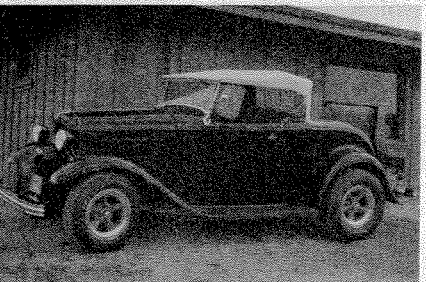
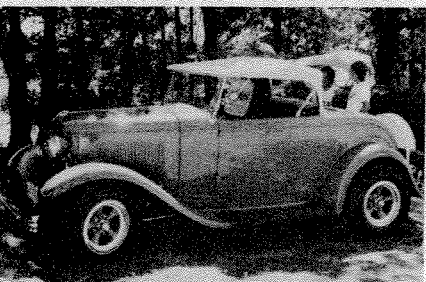
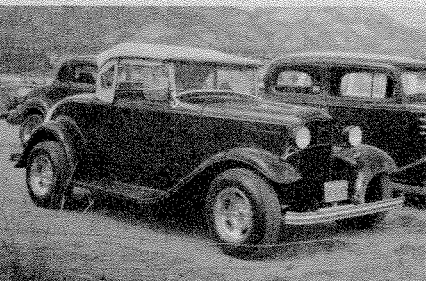
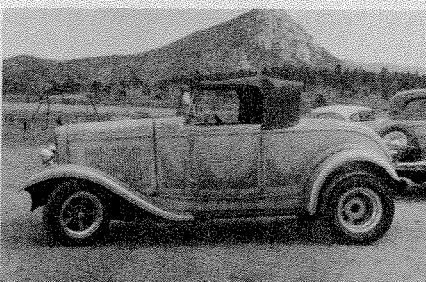
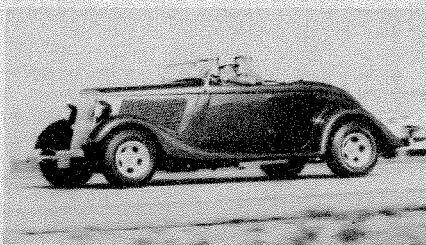
DENVER ROADSTERS

Back in November of '66, a group of high country roadsters owners, including Frank Liston, Vern Holmes, Jack Richards, Gary McCellan and Jack Stamper, founded the Denver Roadsters, a club which continues that special old-time roadster tradition.

The current officers of the 18-man organization consist of Norm Francis, President; Tom Ward, Secretary, and Art Bishop, Treasurer. The car type criteria for belonging to the Denver Roadsters are quite simple: prospective members must own a roadster or phaeton (we suppose tourings are kosher too), but no convertibles, or "cut down" coupes are allowed. Ah, yes, these guys are hard to the core.

They are core-hard street rodders too. Between their first-Friday-of-the-month meetings, at Don Reppo's Lakewood Auto Parts, they helped produce or produced for themselves three events in '73—assisting the Sabers of Denver to put on the Silida Colorado Rod Run, while conducting their own cruise to Central City, Colo., (early summer) and the Denver Roadster Picnic in Estes Park, Colo., (late August). Plus, attending the Cheyenne Rod Roundup, ColoRODans Rod Festival, the Street Rod Nationals and Yellowstone Run.

Car Club Roster
Consists Of The Following:
Roadsters . . . 17 (16 Fords, 1 Chevy)
Phaetons . . . 1 (Ford)



1) Although this is just 50 percent of the Denver Roadster's roster, the club includes, from left, Quinton Sonnafeldt's '23 T, Vern Holmes' '32 Ford, Frank Liston's '32 Ford, Norm Francis' '32 Ford, Jack Richards' '29 Ford, Tom Ward, Jr.'s '31 Ford, Gary McCellan's '34 Ford, Art Bishop's '32 Ford, Bill Brutsman's '23 T. The balance of the club consists of Tom Burke's '34 Phaeton, Dave Carlson's '23 T, Clint Coakley's '30 A, Tom Fletcher's '23 T, Don Davis' '29 A, Mike Hartmeister's Chevy, Jack Stamper's '34 Ford, Rick Nelson's '23 T and Harvey Richardson's '32 Ford.

2) Jack Stamper's '34 features such old time touches as molded-in door hinges, fully de-chromed exterior, chopped windshield to contrast with the mag wheels, wide weenies, late-model '289 Ford power. 3) Now this is a switch . . . Norm Francis' Deuce is sitting on a Model A frame, Traditional appearing '32 uses a 301-in. mouse for motorvation, retains bobbed rear fenders, husky nerf pipe across rear, lowered headlight bar, Deitz headlights, filled grille shell . . . and thankfully, no cowl lights. 4) Art Bishop's classic has the full louvered hood treatment, possesses 283-in. Chevy, a nice accent pin stripe to highlight a wine-color paint scheme. 5) And we thought all the Deuce roadsters were in Los Angeles. Frank Liston's has, among other things, a Columbia 2-speed rear-end. Other than that, the car runs a 260 Ford hooked up to a '39 top loader, and is painted a bright, fire-engine red. Right on! 6) Now this is what we call a nice, nothing fancy, well-detailed roadster. Vern Holmes has added just enough to the stock goodies to give the little black '32 a semi-restored appearance, but hasn't gone overboard and turned it into a gook wagon. Car is powered by a 301 Chevy.